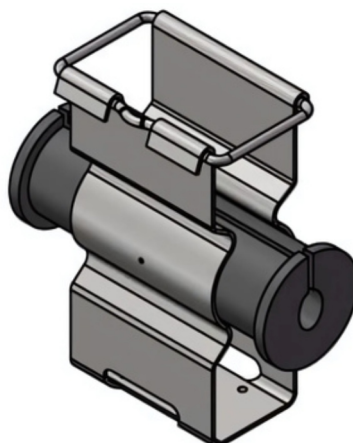
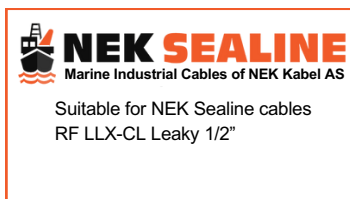


# CONNEX SECURECLAMP

Radiating Clip for LLX 1/2"

With 1/2" to-5-8mm EPDM Insert

RoHS



## Application

CONNEX SECURECLAMP Radiating clip 1/2" with 1/2" to 5-8mm EPDM rubber insert is designed for exceptional durability, performance, and ease of use, making it an ideal choice for outdoor applications. Engineered to withstand harsh conditions, it operates reliably across a wide temperature range, from -40°C to 85°C, delivering consistent performance in various environments. Made from stainless steel 304, it offers quick, tool-free installation and compatibility with various mounting systems.

## General Specifications

Material	Stainless Steel 304
Rubber Insert	EPDM
Colour	Black
Mounting	8.5 mm through hole

## Dimensions

Maximum Cable OD	8.0 mm (0.31 in)
Minimum Cable OD	5.0 mm (0.20 in)
Height	54.0 mm (2.13 in)
Width	20.0 mm (0.79 in)
Length	55.0 mm (2.17 in)

## Testing & Environmental

Anti-Vibration	Compliant to IEC 60068-2-6 : ≥6 hours at resonant frequency
UV Resistance	Compliant to ISO4892.3-1994: ≥720 hours
Corrosion Resistance	Compliant to IEC 60068-2-11: ≥72 hours in salt spray chamber
Operating Temperature	-40 °C to +85 °C (-40 °F to +185 °F)

## Packing Information

Height	180 mm (7.0 in)
Width	310 mm (12.2 in)
UOM	1 Pcs
Packaging	Bag
Gross Weight	0.04 kg (0.088 lbs)
Part Number	CK- 9735978



CONNEX SECURECLAMP is designed for optimal performance with NEK SEALINE RF cables.

Explore the cables below for solutions for complete connectivity:

1/2" RF LLX Leaky cable SHF1 <https://www.nek-sealine.com/en/Product/Details/275257/>

1/2" RF LLX Leaky cable SHF2 <https://www.nek-sealine.com/en/Product/Details/287027/>

