

# Assembly instructions

front Shell

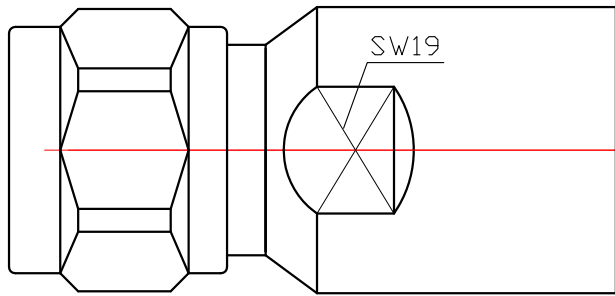


Fig. 1

Rear Shell

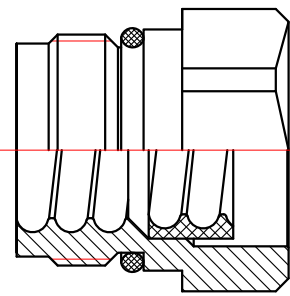


Fig. 2

Cable

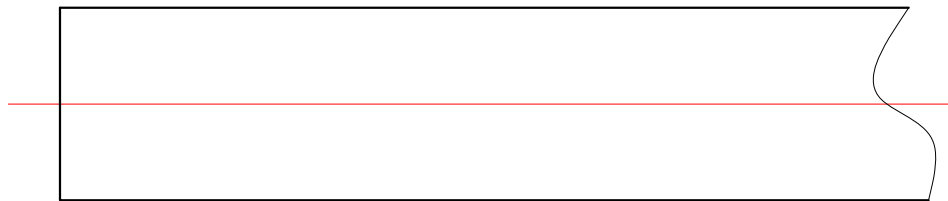


Fig. 3

1. Ready for the parts materials ,see Fig. 1.2. 3

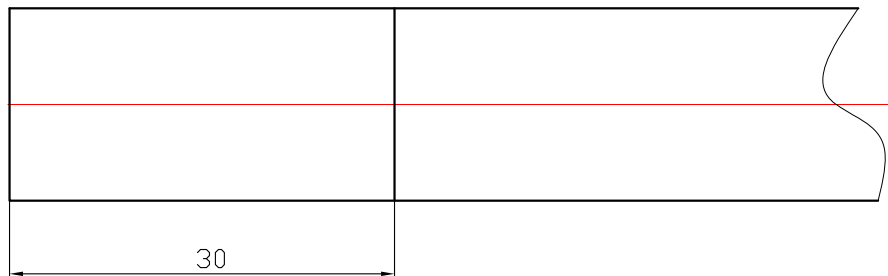


Fig. 4

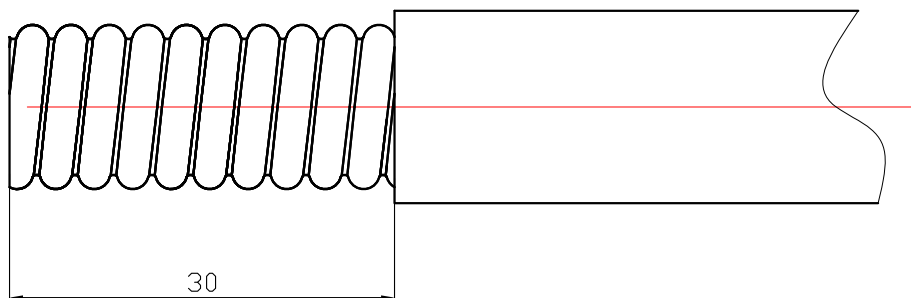


Fig. 5

2. Cable will be cut by Scissors blade, then cut the sheath, pls notice the Fig 5.

# Assembly instructions

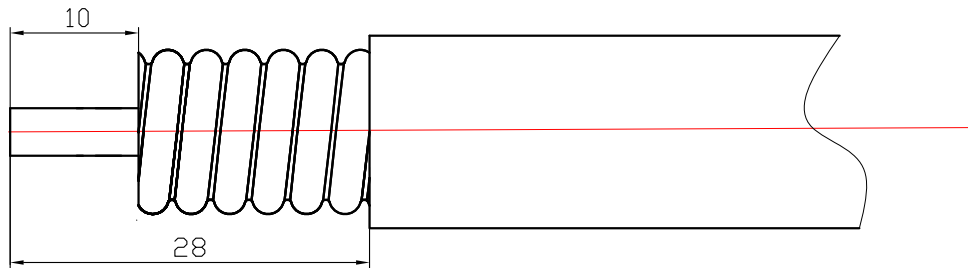


Fig. 6

3. Cut the outer conductor and insulation layer of the cable with special tools, and peel off the outer conductor and insulation layer with pliers after the ring cutting. Cut the outer conductor size to 10mm, as shown in Fig. 6

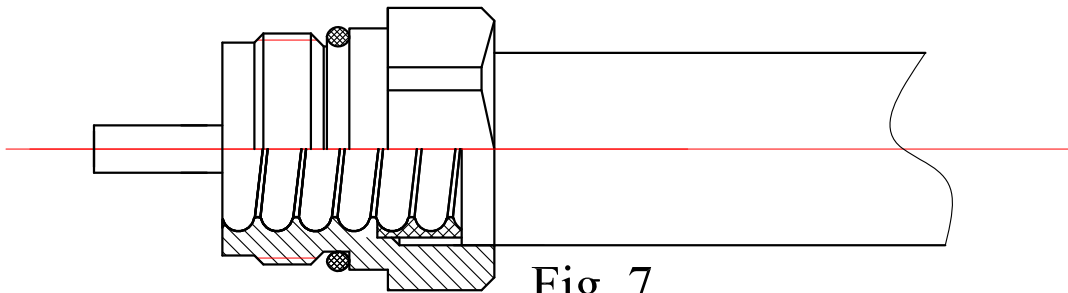


Fig. 7

4. After installing the Rear shell on the cable, the insulation end is flush with the threaded end of the rear body, as shown in Fig. 7

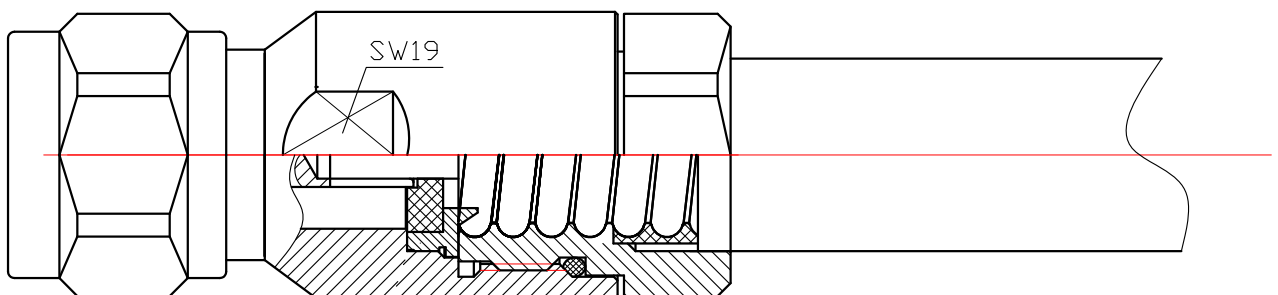


Fig. 8

5. Install the front housing and tighten the front and rear housing with a Spanner. After assembly, check the continuity of the connector and test the relevant performance of the components. The electrical performance index

# Assembly instructions

shall be ensured during the installation of the components. If the inner and outer conductors are short circuited or the contact quality is unqualified, it shall be re-installed. See Fig. 8

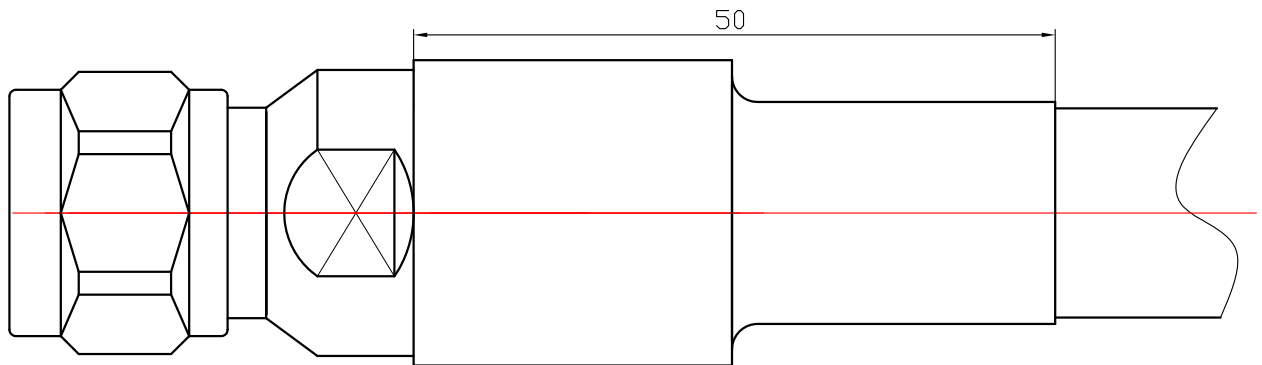


Fig. 9

6. Put half of the heat shrinkable sleeve on the cable and the other half on the connector, and use the hot air gun to move from one end to the other in the circumferential direction. Heat the heat shrinkable sleeve evenly at the other end to make it tightly wrapped on the cable and connector, and there is glue from the unitary end of the sleeve. See Fig. 9 for details